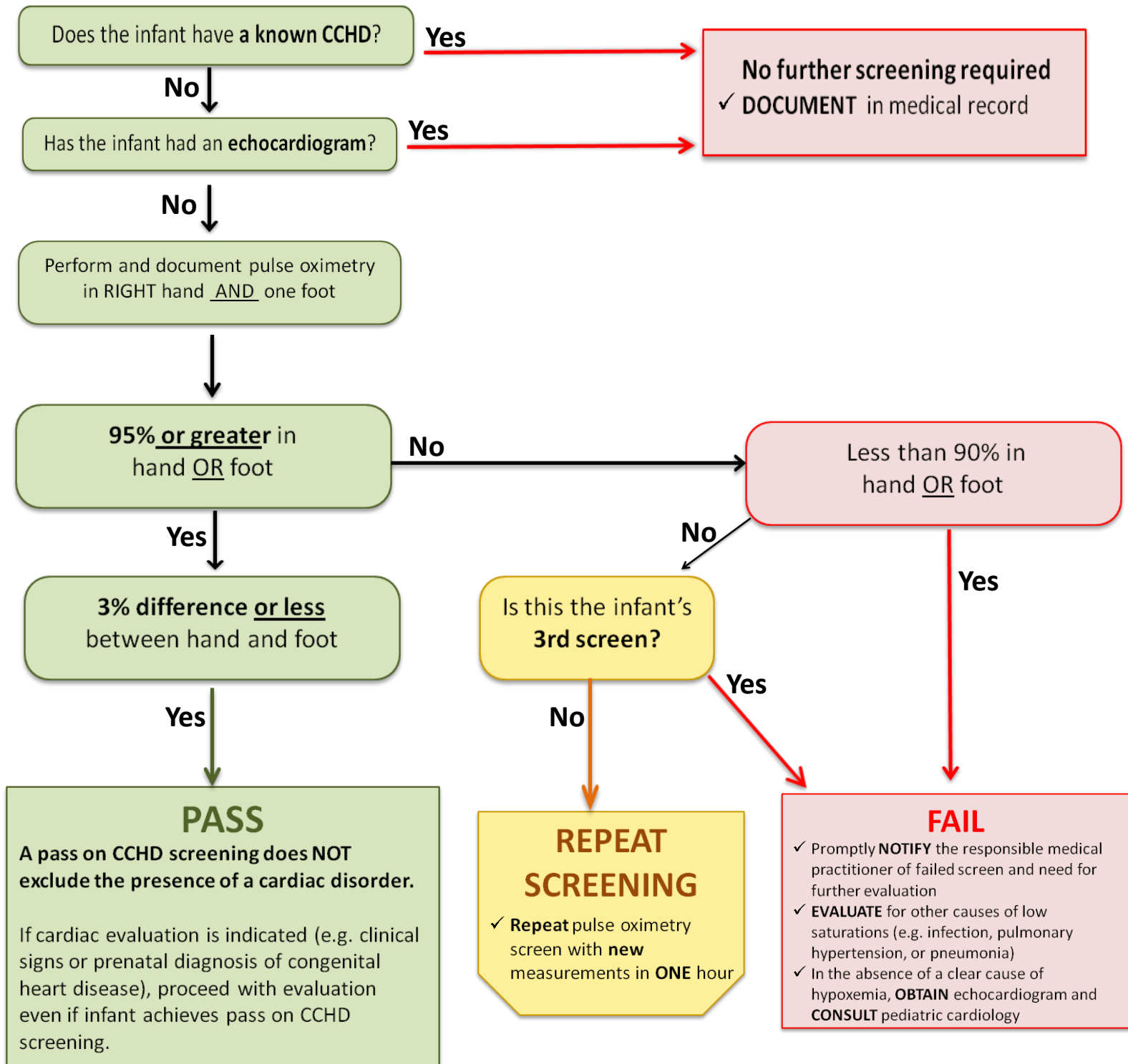


Neonatal Intensive Care Unit (NICU) Protocol

Pulse Oximetry Screening for Critical Congenital Heart Disease (CCHD)

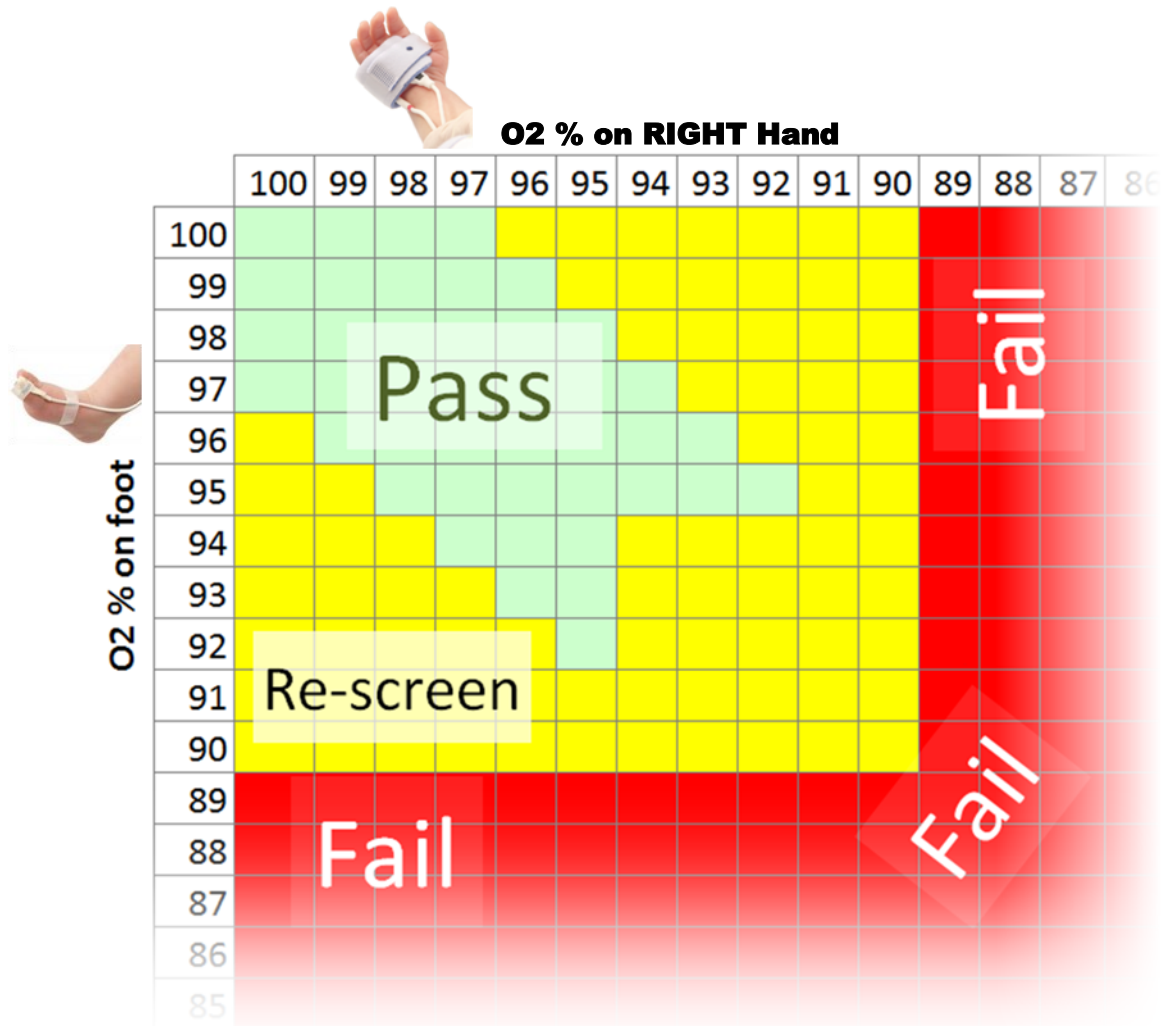
Perform on **all infants once stable on Room Air for 24 hours**



Neonatal Intensive Care Unit (NICU) Protocol

Pulse oximetry screening for Critical Congenital Heart Disease (CCHD)

Perform on **all infants once stable on Room Air for 24 hours**



PASS

A pass on CCHD screening does NOT exclude the presence of a cardiac disorder. If cardiac evaluation is indicated (e.g. clinical signs or prenatal diagnosis of congenital heart disease), proceed with evaluation even if infant achieves pass on CCHD screening.

FAIL

- ✓ Promptly **NOTIFY** the responsible medical practitioner of failed screen and need for further evaluation
- ✓ **EVALUATE** for other causes of low saturations (e.g. infection, pulmonary hypertension, or pneumonia)
- ✓ In the absence of a clear cause of hypoxemia, **OBTAIN** echocardiogram and **CONSULT** pediatric cardiology

REPEAT SCREENING

- ✓ Repeat pulse oximetry screen with new measurements in **ONE** hour
- ✓ If this is 3rd screen proceed to **FAIL**